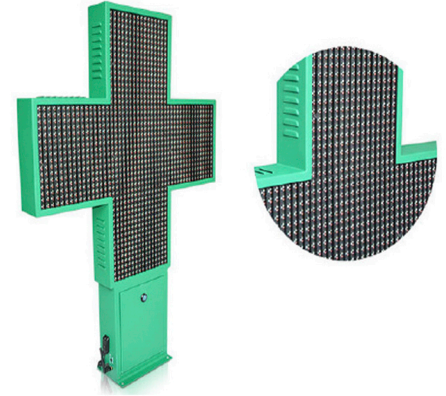
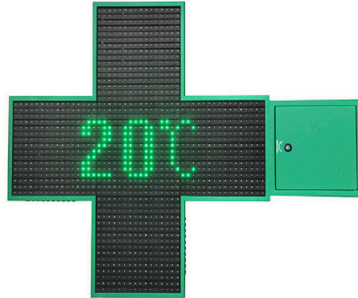
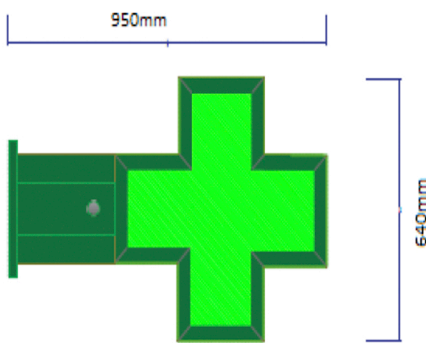


ECO Cross 60CM

The ECO Cross

The ECO Cross is a very popular cross with hundreds of installations around the country. Available as a 60cm or 80cm cross with 48x48pixels in green or green with blue border. The cross has animation, LED Display, time/temperature and scrolling messages. Communication is VIA USB/Wireless dongle to a PC and is dependant on the control PC being in range. The cross comes with a 2 year warranty.



Controller	USB/Wireless Dongle
Pixel Pitch	1G
Pixel Density	3900 pixels/sqm
Cabinet Resolution	48 dot x 48 dot
Cabinet Dimensions	640mm x 960mm x 100mm
Cabinet Material	Aluminium
Cabinet Weight	14kg
Module Size	200mm x 200mm
Module Resolution	16 dot x 16 dot
LED Quantity	2560pcs
Driving Method	Constant current 1/2sc
Viewing Angle	110°
Power (Maximum)	120W
Input Voltage	110V/220V
Ingress Protection	IP65
Temperature Range	-15~60°
Humidity Range	10% ~ 90%RH